



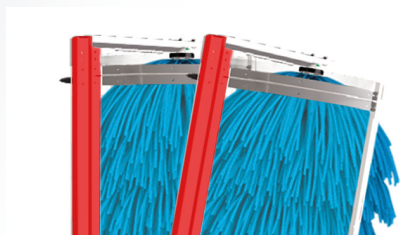
### **A dynamic and economical wash system for small fleets**

ISTOBAL HW'MONOROLL is the new mobile single-brush system in ISTOBAL's HEAVYWASH range intended for all types of small fleets both indoors and outdoors. Completing a full-service wash in less than 10 minutes without having to move the vehicle, this light and motorised standalone equipment is the perfect solution for the daily wash and care of transport fleets and buses.

The model is available in two different heights: with a 4,250 mm [13' -11 3/8"] high brush for all types of trucks and with a 3,650 mm [11' -11 3/4"] high brush perfect for bus fleets. With a galvanised structure painted in red, the unit has a 300 litre on-board tank as well as a set of batteries that ensure uninterrupted autonomy and operation for up to 30 wash services.

ISTOBAL HW'MONOROLL is a compact, easy-to-use equipment that does not generate any fumes and does not need either an electrical connection or a water supply. In combination with our ISTOBAL esens® chemical products, it offers optimum results.

### TILTING BRUSH



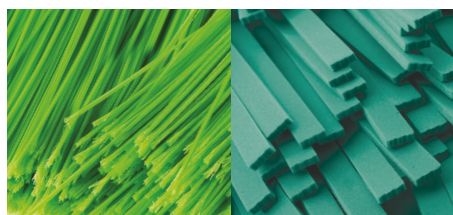
The brush includes a hydraulic system that enables a 15° tilt intended to thoroughly wash the wedge-shaped front end of modern trucks and buses and to avoid panoramic mirrors.

### LIGHT EQUIPMENT



Accurate equipment command with ergonomic controls and soft movements thanks to a hydraulic travel system. On-board controls for motion, water, and brush spin direction and tilt.

### LINK-IT BRUSHES



Depending on the vehicle to be washed, a choice is possible between the two different brush materials of our link-it brush system: link-feel high-density polyethylene brushes, adequate for trucks, or link-foam brushes for bus fleets.

### HIGH-EFFICIENCY BATTERIES



24V battery bank with a life of 1,100 charge cycles and an external battery-capacity viewer. A latest generation battery charger -total charge in just a few hours- ensures uninterrupted autonomy for up to 30 wash services.

#### DATA SHEET

WASH HEIGHT	3,650 mm [11'-11 3/4"] 4,250 mm [13'-11 3/8"]
EQUIPMENT DIMENSIONS	1,550 mm x (3,810 / 4,410 mm) x 1,706 mm [5'-1"] x ([12'-6"] / [14'-5 5/8"]) x [5'-7 1/8"]
WATER TANK	300 L (79.25 gal)
WATER CONSUMPTION	25 L/min (6.6 gal/min)
POWER SUPPLY	24 V batteries
BRUSH DIAMETER	1,000 mm [3'-3 3/8"]
BRUSH FRONT TILT	15°

